

3D Layout Navigator

LN-150



Simple, Precise Layout Navigation

World's first 3D positioning system designed for construction layout

LN-150

The first time you see it, you know it's unlike anything you've experienced before. Everything about the LN-150, from the advanced technology inside, to its clean and innovative design, is a game changer for layout. With Topcon time-proven and robotic total station technologies, the instrument offers a totally new tool that's easy to use, without sacrificing the accuracy and versatility needed for all types of construction layout.

With the press of just one button, the LN-150 automatically self-levels and is ready for action. Pair it with a hand-held, touchscreen controller and you are ready to go to work.

With a ruggedized field controller, call up a simple point layout or large CAD drawings — right in the palm of your hand, anywhere on the job site. Display the design point or line that needs to be staked out, then touch it and the LN-150 immediately points to the exact location. It can also lock onto a prism and guide you to the next design points. One-person layout has never been this easy.

From traditional utility layout, to foundations, electrical, plumbing, walls, ceilings, HVAC, and much more – layout anything on the job site up to 130 m from the LN-150. Never before has construction layout been so powerfully simple.

Building interiors

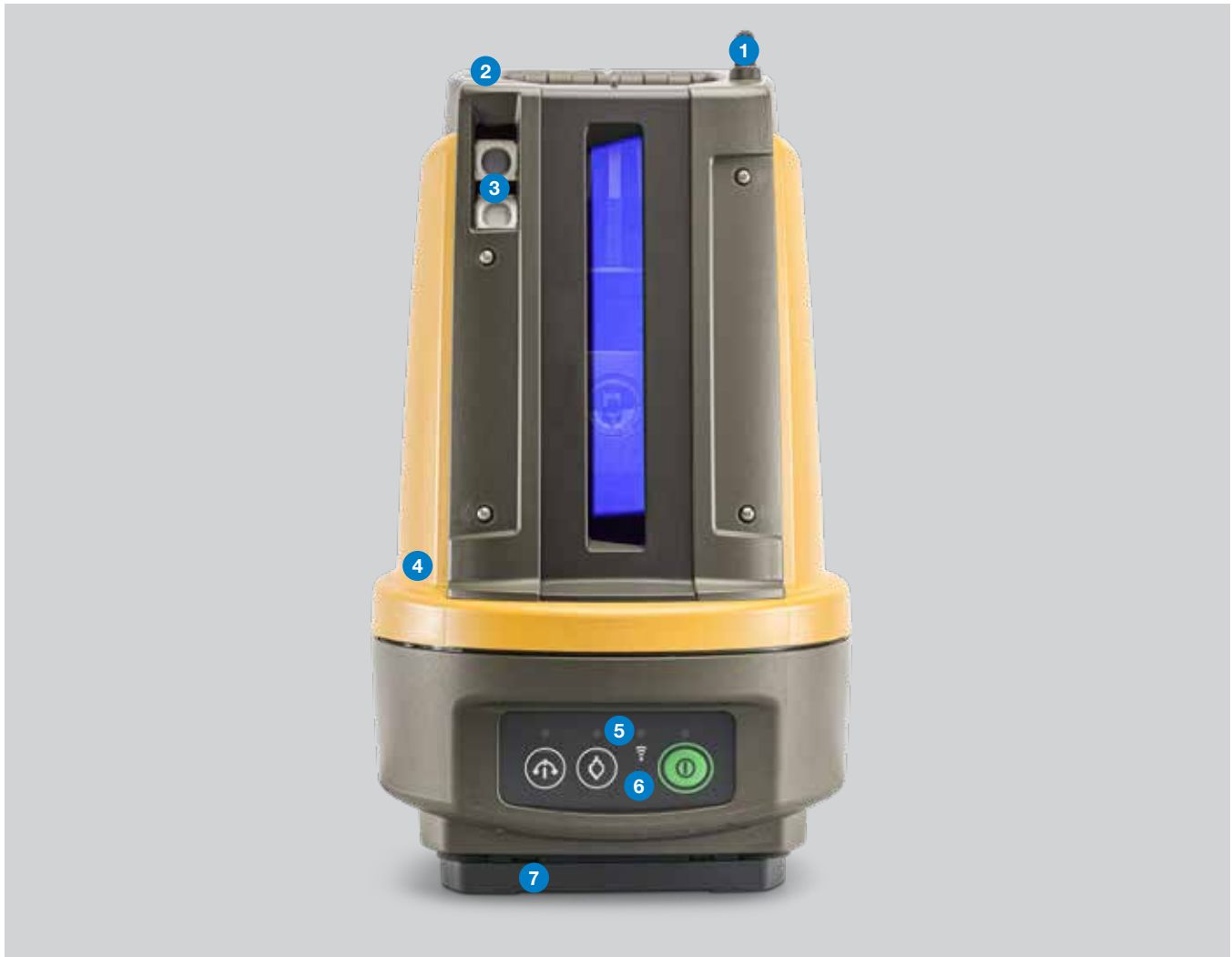
Mechanical, electrical, plumbing

Foundations and footings

Utilities and general layout

Construction layout





- 1 Interference-free communications
- 2 Easy-grip carrying handle
- 3 High-visibility guide lights
- 4 Completely sealed waterproof and dustproof housing
- 5 LED indicators and bright laser plummet
- 6 Easy, one-button setup
- 7 Self-leveling base

3D layout tool

The LN-150 is a compact, self-leveling, easy-to-setup 3D layout tool designed for construction applications. Use the LN-150 in place of traditional methods such as tapes or other layout tools. Compact, rugged and lightweight, the LN-150 is ideal for construction layout and as-builts.

Building Information Modeling (BIM)

Maintain coordination throughout your projects. Knowing what was done before and working from the same design plan is critical to keep on schedule and avoid costly collisions. With Topcon BIM solutions, you stay connected to the same design.



Intuitive, Self-leveling Robotic Total Station



Rugged compact design

- Small and lightweight
- Waterproof – dustproof design
- Easy to carry
- Completely sealed housing



Easy setup and operation

- On the ground or decking
- Mounts on tripod or column clamp
- Automatic self-leveling
- Alerts user if disturbed



Advanced 3D measuring and layout

- Built-in wireless or Bluetooth® communication connectivity
- 130 m (984 ft) working range
- Automatically turns to layout points
- Tracks a standard prism



Easy to perform as-built checks

- Fast and accurate
- Reliable quality control
- Identify changes from original plans
- Ensure accurate record keeping

Key Components

- LN-150 3D Layout Navigator
- New BDC72 batteries and CDC77 battery charger offer improved working duration
- Carrying case
- Seamless cloud-connected workflows with Autodesk, Bentley, and MAGNET
- MAGNET Construct optional



Specifications subject to change without notice.
© 2021 Topcon Corporation. All rights reserved.
7010-2297 C 2/21

www.topconpositioning.com/ln-150

